

# CASE

CONSTRUCTION

## HYDRAULIC EXCAVATOR **CX210B** OFFSET BOOM

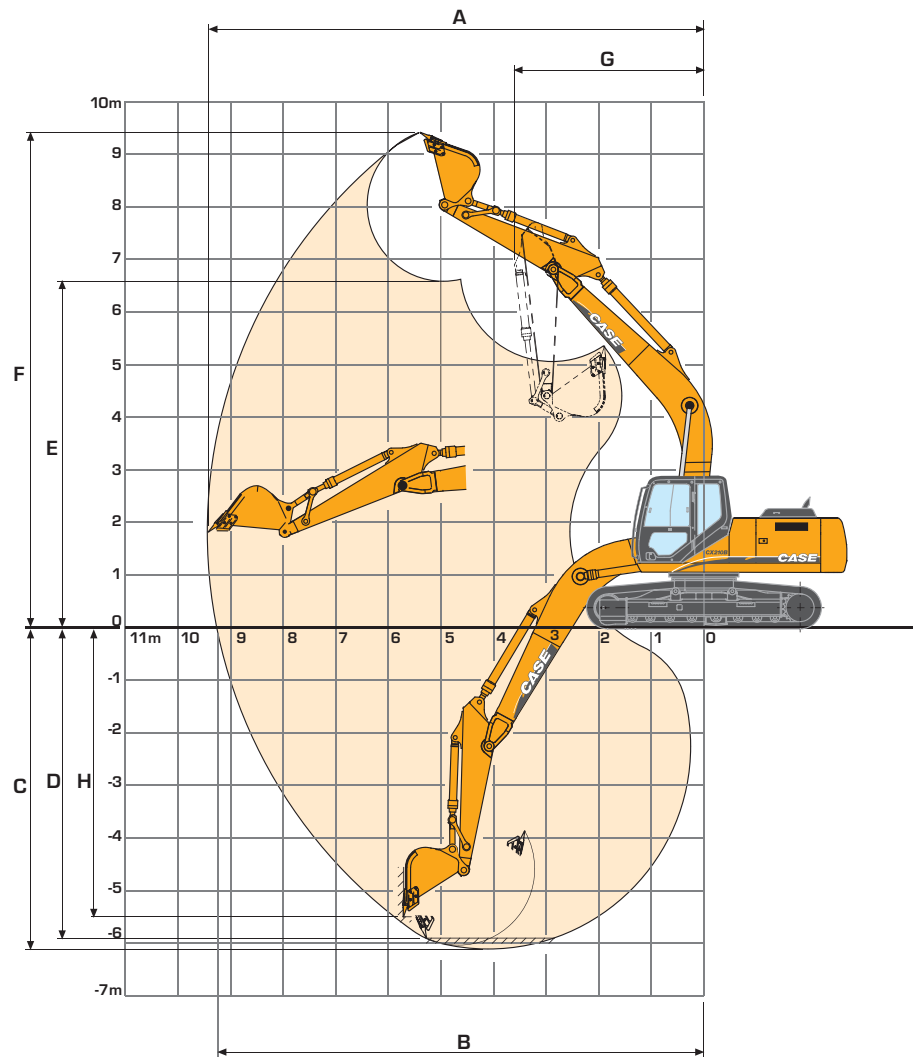


Engine Horsepower	117kW - 157hp
Operating weight	22 t
Bucket capacity	0.25 m <sup>3</sup> to 1.25 m <sup>3</sup>

P R O F E S S I O N A L P A R T N E R

# PERFORMANCE DATA

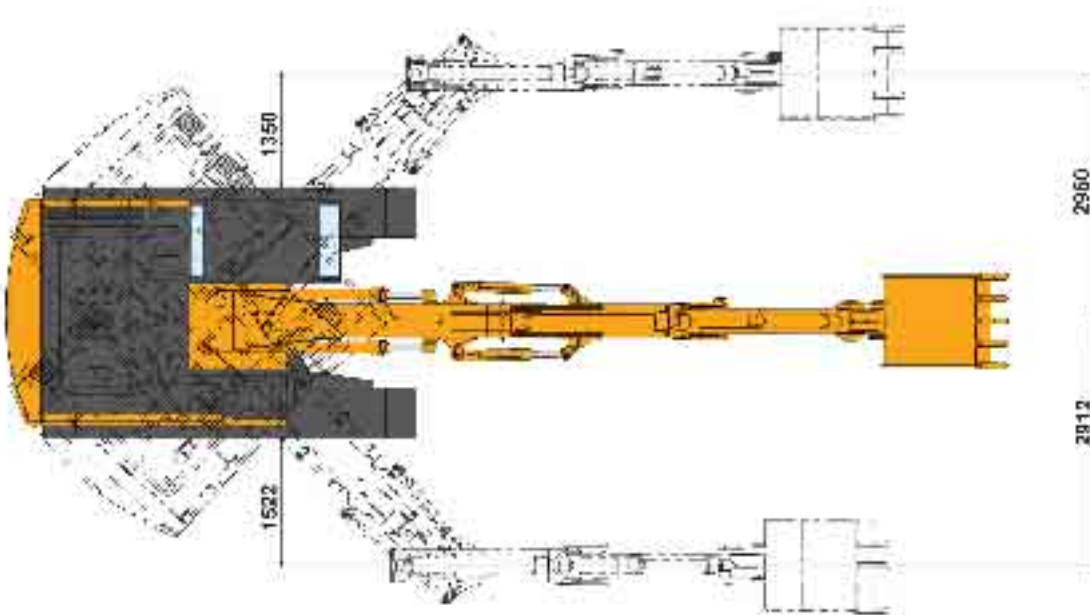
WITH 5.70 m OFFSET BOOM AND 2.40 m DIPPER



## DIPPER LENGHT

**2.40 m**

A	Maximum digging reach	m	9.42
B	Maximum digging reach at ground level	m	9.24
C	Maximum digging depth	m	6.10
E	Max dump height	m	6.71
F	Overall reach height	m	9.48
G	Swing radius in max digging reach	m	5.23

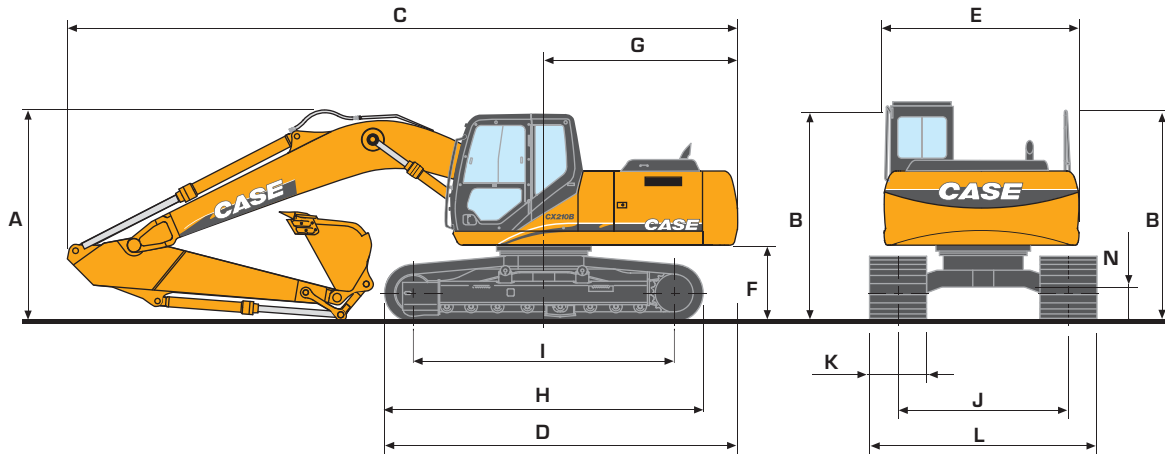






# GENERAL DIMENSIONS

WITH 5.70 m OFFSET BOOM AND 2.40 m DIPPER



## DIPPER LENGTH

**2.40 m**

<b>A</b> Overall height (with attachment)	m	2.40
<b>B</b> Height (cab / handrail)	m	3.32
<b>C</b> Overall length (with attachment)	m	2.94 / 2.96
<b>D</b> Overall length (without attachment)	m	9.52
<b>E</b> Width of upperstructure	m	4.96
<b>F</b> Upperstructure ground clearance	m	2.77
<b>G</b> Swing radius (rear end)	m	1.04
<b>H</b> Track overall length	m	2.72
<b>I</b> Centre idler to centre sprocket	m	4.47
<b>J</b> Track gauge	m	3.66
<b>K</b> Track shoe width standard	mm	2.39
<b>L</b> Track overall width	m	600
		- 500mm shoes
		- 600mm shoes
		- 700mm shoes
		- 800mm shoes
<b>N</b> Ground clearance	m	0.46

## WEIGHT

With 5.70 m Offset boom  
2.40 m dipper - 698 kg,  
1m<sup>3</sup> bucket operator and  
full fuel tank

### WEIGHT (kg)

	LC	NLC
shoes 500 mm steel		22.170
shoes 600 mm steel	21.720	
shoes 700 mm steel	22.220	
shoes 800 mm steel	22.520	

# CX210B

# CX210B

## STANDARD EQUIPMENT & OPTIONS

### STANDARD EQUIPMENT

#### Engine control

- Common rail engine Tier III European Standards
- Electronic control of the injection system
- Automatic engine pre-heating
- Automatic/manual engine return to idle
- Exhaust Gas Recirculator
- Emergency stop
- Electrical refuel pump with automatic stop
- Fuel filter with water separator

#### Hydraulic control

- Auto/Heavy/Super Power working modes
- Pump torque variable control
- Automatic Power boost control
- Swing brake control
- High performance "Super Fine" synthetic fiber hydraulic filter (high contamination catch)
- Hydraulic safety valves on boom and dipper
- 2 travel speeds with auto down shifting

#### Operator environment

- High visibility cab with safety glass
- Adjustable and retractable armrest console with position memory
- Safety lever
- Self adjusting Air conditioning and heating system
- Cup holder
- High visibility side monitor display with automatic brightness
- Messages (function, temperature, safety, ...) on the display
- Integrated diagnostic system
- Working modes (Auto/Heavy/Super Power) combined with engine throttle
- Anti-theft device
- Hourmeter
- Selectable auxiliary hydraulic flow pre-settings
- RH front console with clock and cell phone holder
- High capacity shock absorbers on cab with 4 points fluid mountings
- Rain deflector
- Windscreen with lockable opening
- Windscreen washer and wiper
- Removable lower front windscreen with storage location in cab
- Glass cab roof window and sliding sun shade
- ISO control pattern low effort & short joysticks
- Adjustable sun visor

- Washable cab floor mat
- Rear view mirror and safety mirrors
- Storage compartments
- Integrated cool box
- 12V and 24V DC accessory sockets
- Hammer/Shear change selected from the cab
- Fore & aft adjustment of the whole seat & console

#### Electrical system

- Water proof connectors
- Double horn
- 2 working light on the cab
- Working light on the fuel tank
- Working light on the boom

#### Equipment

- EMS (Extended Maintenance System) pins and bushings as Standard (1000 hours lubrication interval for all, except buckets pins at 250 hours)
- Low friction resin side shims on boom and dipper
- Sealed and lubricated tracks
- Track guides (1 guide & front)
- Large tool box
- Pre-disposal for the optional cab protection

#### Operator seat

- Fully adjustable low frequency air suspension seat including double acting hydraulic damper
- Adjustable head rest
- Adjustable seat back angle with Fully flat seat reclining
- Adjustable arm rest
- Adjustable lombar position
- Height/fore & aft adjustment
- Safety belt

### OPTIONS

- Bucket/clamshell hydraulic circuit
- Hammer hydraulic circuit
- Hammer/shear hydraulic circuit
- Additional track guides (3 guides & front)
- Track width (500mm - 600mm - 700mm - 800mm depending on the version)
- Windscreen protection
- Cab protection
- GPS (Global Positioning System) by satellite
- Centralized greasing system automatically actuated by an electrical grease pump

Standard and optional equipment shown can vary by country.

#### Worldwide Case Construction Equipment Contact Information

**EUROPE/AFRICA/MIDDLE EAST:**  
Centre D'affaires EGB  
5, Avenue Georges Bataille - BP 40401  
60671 Le Plessis-Belleville - FRANCE

**NORTH AMERICA/MEXICO:**  
700 State Street  
Racine, WI 53404 U.S.A.

**LATIN AMERICA:**  
Av. General David Sarnoff 2237  
32210 - 900 Contagem - MG  
Belo Horizonte BRAZIL

**ASIA PACIFIC:**  
Unit 1 - 1 Foundation Place - Prospect  
New South Wales - 2148 AUSTRALIA

**CHINA:**  
No. 29, Industrial Premises, No. 376,  
De Bao Road, Waigaoqiao Ftz, Pudong,  
SHANGHAI, 200131, P.R.C.

**NOTE:** Standard and optional fittings can vary according to the demands and specific regulations of each country. The illustrations may include optional rather than standard fittings - consult your Case dealer. Furthermore, CNH reserves the right to modify machine specifications without incurring any obligation relating to such changes.

#### Case Construction Equipment

CNH UK Ltd.  
Armstrong House  
The Finningley Estate  
Hayfield Lane  
Doncaster  
DN9 3XA  
Fax +44 (0)1302 802126

[www.casece.com](http://www.casece.com)

**CASE**  
CONSTRUCTION



Conforms to directive 98/37/CE