



Wheeled Excavator

Operational weight: 12 tons
Perkins engine: 75 kW (101 hp)
Hydrostatic transmission with 4 wheel steer

WX120



C O M M I T T E D T O Y O U R N E E D S



ENGINE

Make PERKINS
 Model 1004.40T
 Type.....diesel, 4 stroke, direct injection, turbocharged
 Number of cylinders 4
 Displacement..... 3990 cm³
 Bore x stroke..... 100 x 127 mm
 Cooling..... water-cooled
 Net power EEC 80/1269 (road)..... 101 hp / 75 kW
 Engine speed (road) 2000 rpm
 Net power EEC 80/1269 (work)..... 90 hp / 67 kW
 Engine speed (work) 1900 rpm
 Engine conforming to European norms in force.
 Engine auto idle can be deactivated manually.
 Electronic control of engine speed by an electric selector switch.
 Cold start device.



HYDRAULIC SYSTEM

Closed centre Load Sensing hydraulic system for controlling the attachment and an independent circuit for upperstructure swing to ensure perfect simultaneity of all movements.

PUMPS

The circuit comprises 2 variable flow displacement pumps
 - One pump for the boom and travel circuit
 Maximum flow 150 l/min
 Maximum operating pressure 350 bar
 - One pump for the upperstructure swing circuit
 Maximum flow 53 l/min
 Maximum operating pressure 310 bar

CONTROL VALVES

- One closed centre control valve block (with 9 sections, of which 1 is reserved for the auxiliary circuit). This block controls the attachments, the dozer blade (or the stabilisers) and travel.
- One block of 1 section for upperstructure swing control.

UPPERSTRUCTURE SWING

Engine with axial pistons
 Swing speed..... 8 rpm
 Swing brake..... automatic disk brake
 Final drive epicyclical oil immersed
 Turntable in a grease bath
 Mechanical swing locking control

CYLINDERS

Cylinders with end of stroke shock absorbers.
 Safety valves on boom, offset, dozer blade and axle locking cylinders



ELECTRICAL CIRCUIT

Circuit..... 24 volts
 Maintenance free batteries..... 2 x 12 v. – 75 A/h
 Alternator 55 A
 Double sealed electrical connections



UNDERCARRIAGE

Modular frame allowing the assembly of dozer blade or stabilisers (front or rear).
 Toolbox

TRANSMISSION

Hydrostatic with 4 drive wheels
 The hydraulic motor acts through a gearbox and has 2 gear ranges.

Road speed

First 0 to 6 km/h
 Second 0 to 17 km/h
 Third 0 to 30 km/h
 Gradient that can be overcome 16 %

Work speed

First 0 to 2 km/h
 Second 0 to 6 km/h
 Third 0 to 10 km/h
 Gradient that can be overcome 60 %

AXLES

Axles with oil immersed disk brakes

Rear axle: fixed directional

Front axle: swivelling directional

Total swivel 14°
 Vertical clearance 320 mm
 The front axle can be blocked hydraulically

TYRES

8 wheels 10.00 x 20 with twinning rings
 4 wheels 600/40 x 22.5

STEERING

Type..... ORBITROL with safety valves
 Pump with gears
 Double rod cylinders, with double action
 Choice, by means of a selector switch, between 3 steering modes

- 2 wheel steer
- 4 wheel steer
- Crab steer

Ability to turn with the engine stopped

Turning radius outside the tyres :

Front axle turned 6.50 m
 Front and rear axles turned 3.70 m

Note: the maximum speed can be reached only in the 2 wheel steer position.



BRAKES

Brake lock and service brakes: oil immersed disk brakes acting on the 4 wheels with independent double circuit

Parking brakes: oil immersed multiple disks brakes. Mechanical engagement, electro-hydraulic disengagement

Emergency brake: with an independent double circuit to ensure braking on at least one axle in case of engine failure



CAB

Fitted with a maximum of «comfort» accessories in the standard model, the cab is equipped with large tinted glasses, a sun visor on the rear window, a sun roof, a windscreen wiper and windshield washer system, a heating system, providing the best comfort whatever the external temperature conditions.

The adjustable suspension seat is equipped with armrests and a safety belt.

The small «hydraulically» assisted steering wheel, is mounted on an adjustable steering column; the operator can make use of a radio with loudspeakers integrated into the cab. The operation and control of the main functions of the machine are grouped together on three ergonomic consoles located in the operator's best field of vision according to the work being carried out.



STEERING COLUMN

(Control during the machine's travel) groups together the following functions:

- Rotary selector to control the parking brake, the service brake and axle locking. The engine cannot be started if this selector is not in the «parking brake» position.
- Speed indicator (tachometer)
- Brake pressure gauge.
- Brake control, axle locking and «road» light indicators.
- Gearshift control lever (3 per range).
- High beam, directional signal, windscreen washer, windscreen wiper and horn control lever.
- Emergency indicator control knob
- Contact switches placed along the steering column for:
 - Hammer circuit, roof light, pilot circuit locking

(cancellation of attachment and swing movements during road travel) and «anti-tilt» warning.

MAIN INSTRUMENT PANEL

Placed in front and on the right of the operator's seat, it groups together the machine's main indicators and controls:

- Dial gauges with audible and visible alarm to indicate the engine temperature and diesel oil level, economy (E) mode indicator, control and indicator of the auto idle position, Speed range control (road, work site), audible alarm cancellation, engine oil, coolant and hydraulic oil level control button, battery charge and air filter clogging indicator lamp, work lamp control and indicator.
- The hour meter placed on the side of the instrument panel is visible from the ground.
- Electronic immobiliser lock with red flashing operating light.



SIDE INSTRUMENT PANEL

Placed on the side of the right hand control lever, it groups together the following functions:

- Engine battery master key, economy (E) mode control button, engine swing speed adjustment control, steering mode (normal, 4 wheel steer, crab steer) selection control button with audible and visible warning for rear wheel realignment (mandatory for changing modes).
- Cab heating and air-conditioning controls (optional)



CAPACITIES

Engine oil	8.5 l
Coolant	21.5 l
Fuel reservoir	211 l
Hydraulic system	160 l
Axles (total).....	20 l
Swing reduction gear	3 l

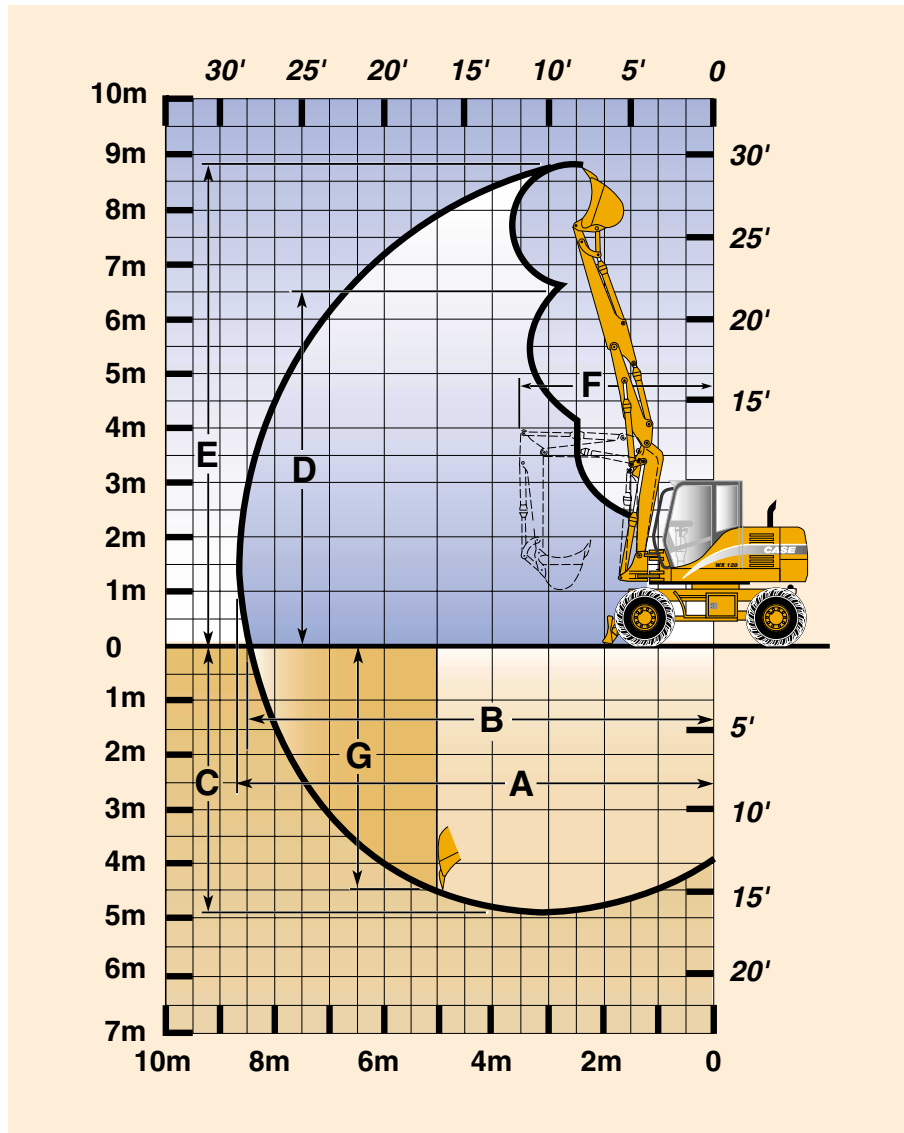


ATTACHMENT

The standard model of the WX120 is equipped with a articulated boom, mounted on a swing swivel, and a 2.00 m dipper and 650 mm bucket.



BACKHOE EQUIPMENT



		boom :		
		Articulated		
		dipper (m)		
A	Maximum digging reach	m	8.40	8.70
B	Maximum digging reach at ground level	m	8.15	8.50
C	Maximum digging depth	m	4.60	4.95
D	Maxi dump height	m	6.35	6.70
E	Overall reach height	m	8.55	8.90
F	Minimum swing radius	m	3.60	3.85
G	Vertical straight wall dig depth	m	4.45	4.80
	Digging force	daN	4950	4450
	Breakout force	daN	7900	7900

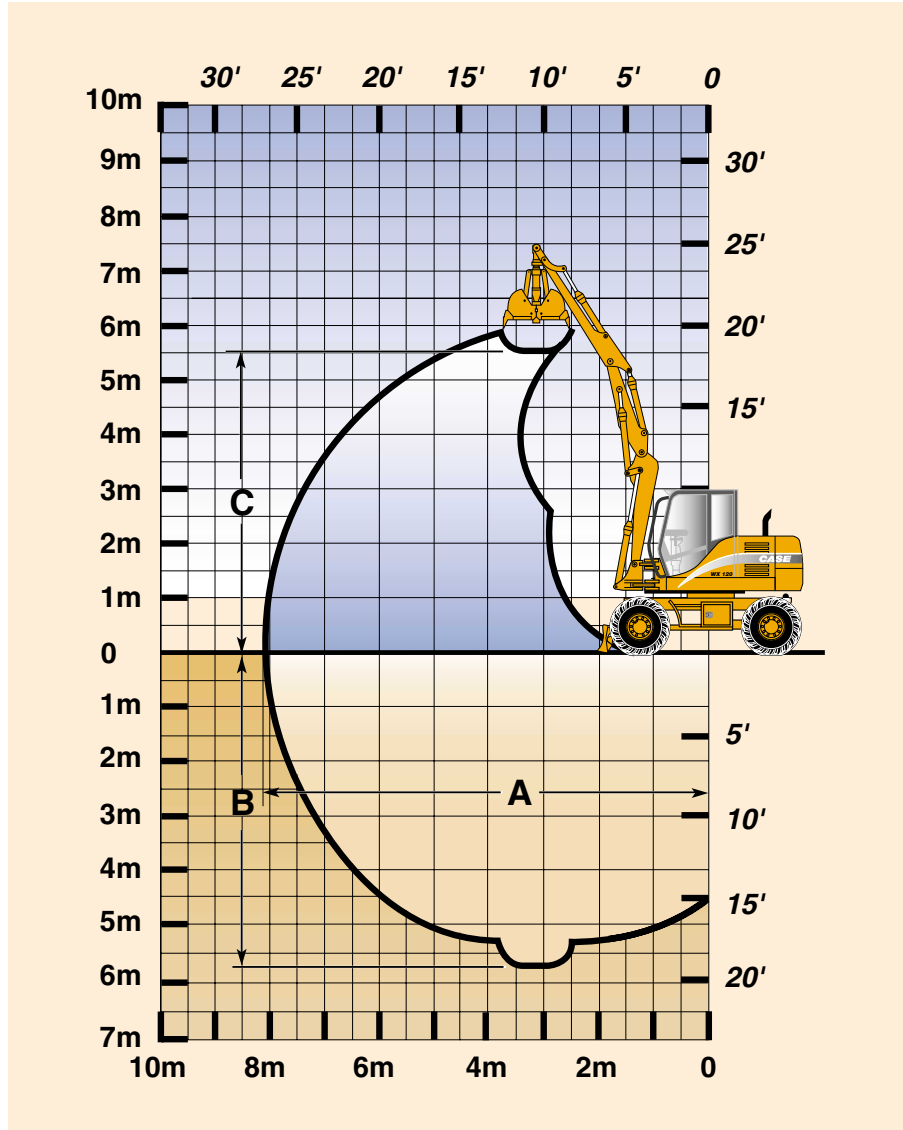


BUCKET

SAE capacity	Litres	200	295	385	470	530	590
Width	mm	350	500	650	800	900	1000
Weight	kg	153	171	197	226	241	258



CLAMSHELL ATTACHMENT

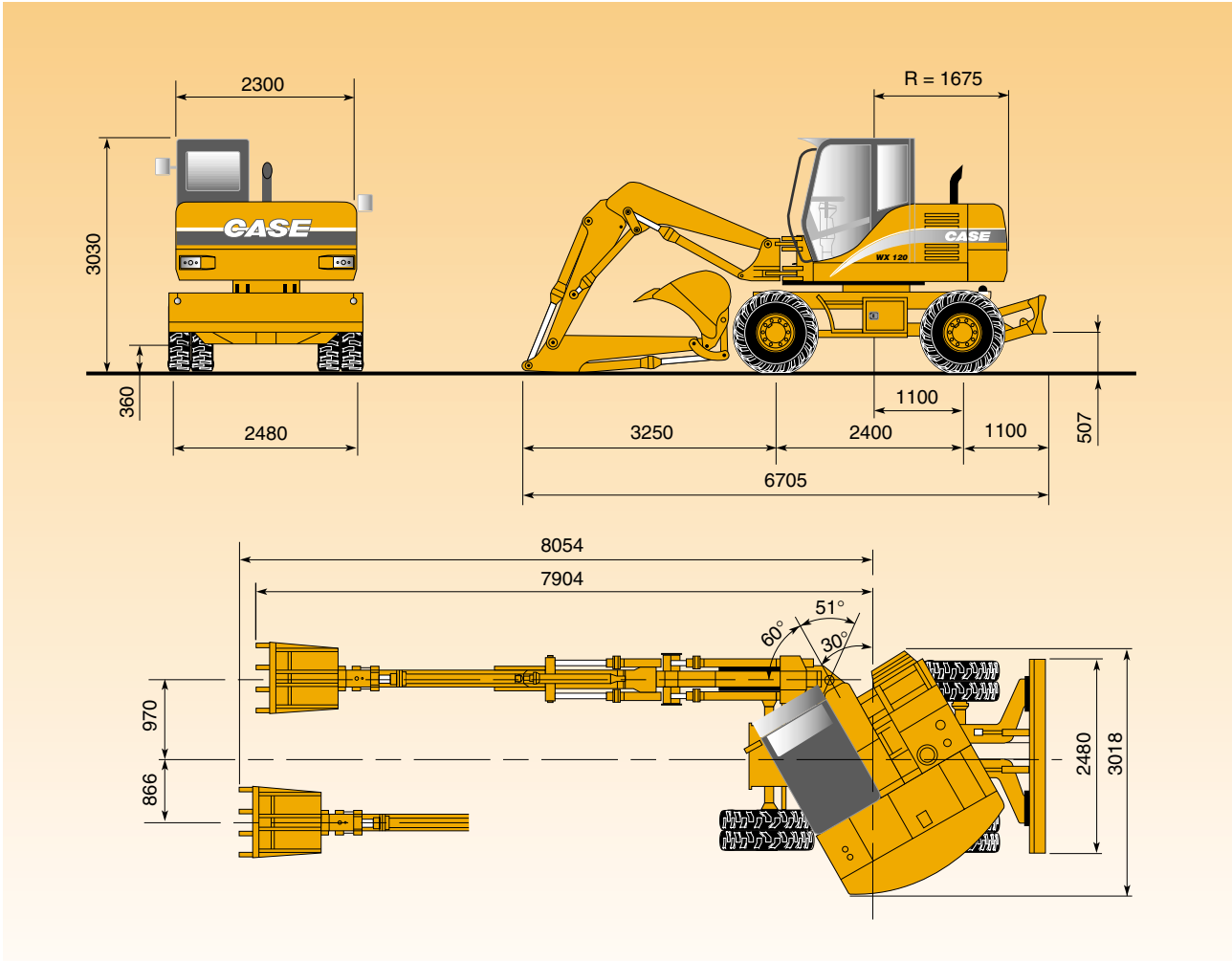


	boom :	Articulated	
	dipper (m)	2.00	2.35
A Maximum reach	m	7.80	8.15
B Maximum digging reach	m	5.30	5.65
C Dump height	m	5.30	5.60





GENERAL DIMENSIONS



Operating weight (with 2.00 m dipper, 650 mm bucket, twin wheels, full fuel tank and with the operator)

With rear dozer blade	11730 kg
With rear stabilisers	11530 kg
With rear stabilisers and front dozer blade.....	12230 kg





LIFTING CAPACITY

WX120 with dozer blade **or** stabilisers on the ground, articulated boom, 2.00 m dipper and 650 mm bucket

Reach	3 m		4.5 m		6 m		maxi	
	Front	360°	Front	360°	Front	360°	Front	360°
6 m			3580*	2320			3490*	1640
4.5 m			3300*	2300	3120*	1350	2770*	1120
3 m			4470*	2120	3310*	1300	2540*	930
1.5 m	5080*	4380	5140*	2060	3350*	1220	2440*	880
0	4120*	3550	5240*	1810	3290*	1170	2380*	920
-1.5 m	4480*	3550	4170*	1820	2560*	1180	1910*	1110
-3 m		3510*		1530*				770*

WX120 with dozer blade **and** stabilisers on the ground, articulated boom, 2.00 m dipper and 650 mm bucket

Reach	3 m		4.5 m		6 m		maxi	
	Front	360°	Front	360°	Front	360°	Front	360°
6 m			3580*	2440			3490*	1730
4.5 m			3300*	2420	3120*	1430	2770*	1190
3 m			4470*	2250	3310*	1380	2540*	1000
1.5 m	5080*	4530	4530*	2180	3540*	1300	2540*	940
0	4120*	3800	5240*	1930	3450*	1250	2380*	990
-1.5 m	4480*	3800	4170*	1930	2560*	1260	1910*	1180
-3 m		3510*		1530*				770*

WX120 with dozer blade **or** stabilisers on the ground, articulated boom, 2.35 m dipper and 650 mm bucket

Reach	3 m		4.5 m		6 m		maxi	
	Front	360°	Front	360°	Front	360°	Front	360°
6 m			3190*	2360			2760*	1390
4.5 m			2560*	2340	2920*	1370	2270*	1000
3 m			3260*	2160	3160*	1310	2100*	840
1.5 m			4180*	2080	3350	1220	2090*	790
0	4090*	3530	5320*	1790	3270	1150	2240*	830
-1.5 m	3860*	3460	4490*	1770	2890*	1140	1850*	980
-3 m		3300*		2390*				890*

WX120 with dozer blade **and** stabilisers on the ground, articulated boom, 2.35 m dipper and 650 mm bucket

Reach	3 m		4.5 m		6 m		maxi	
	Front	360°	Front	360°	Front	360°	Front	360°
6 m			3190*	2490			2760*	1470
4.5 m			2560*	2460	2920*	1450	2270*	1060
3 m			3260*	2280	3160*	1390	2100*	900
1.5 m			4180*	2200	3460*	1300	2090*	850
0	4090*	3780	5320*	1910	3490*	1230	2240*	890
-1.5 m	3860*	3710	4490*	1890	2890*	1220	1850*	1040
-3 m		3300*		2390*				890*

- Machine in «LIGHT» mode

- Lift capacities are taken in accordance with SAE J 1097 / ISO 10567 / DIN 15019-2.

- Lift capacities shown in kg do not exceed 75% of the tipping load or 87% of the hydraulic lift capacity.

- Capacities that are marked with an asterisk are hydraulic limited

- If the machine is equipped with a quick coupler, subtract the weight of the quick coupler from the load shown in the tables to calculate the real lifting capacity.

STANDARD EQUIPMENT

8 wheels with 10 x 20 tyres
3 mode steering system
 Steerable front wheels
 Steerable front and rear wheels
 Crab steering
Boom foot articulation
Articulated boom
Safety valves
Clamshell circuit
2.00 m or 2.35 m dipper
Step plate «tool box» on the right-hand side
Left-hand side step plate
Immobiliser
Radio
Rainproof cab protection visor
Roof light
Rear dozer blade with bracket to support stabilisers



OPTIONS

4-wheel model 600/40-22.5
«Hammer» circuit
Organic oil
Clamshell bucket support
Left-hand side step plate «tool box»
Air conditioning
P2A (stabilisers in place of the dozer blade)
P2AL front dozer blade, rear stabilisers
P4A front and rear stabilisers
Rubber track shoes for stabilisers

Standard and optional equipment can vary from country to country

Conforms to directive 98/37/CE



NOTE: Standard and optional attachments and equipment may vary according to requirements and regulations from country to country. The photos given may show non standard or unmentioned items. Furthermore CASE reserves its right to modify specifications of its machines without prior warning, without incurring any obligation whatsoever that might result from such modifications.



CASE

Published by **Case France**
18, Place des Nymphéas
Z.I. Paris Nord II
95915 ROISSY CDG Cedex
FRANCE
Tél. : 01.49.90.23.00
Fax : 01.49.90.26.15