

400

SERIES

SKID STEERS

435-445 vertical lift

CASE



P R O F E S S I O N A L P A R T N E R

400 SERIES

LOADER ARM DESIGN VERTICAL LIFT

Designed with a Power Reach vertical heavy-lift loader linkage, the 435 and 445 offer the industry's highest lift capacity. Easily lift heavy pallets of brick or large bales, then precisely load trailers or trucks.

MAXIMUM REACH AT LOWER HEIGHTS

The Power Reach design on the 435 and 445 gives you maximum reach at any height, making it easier to place loads on trailers. Plus, the design maintains maximum reach all the way to full height, helping you unload into the middle of high-sided dump trucks.

HYDRAULIC SELF-LEVELLING OPTION IMPROVES MATERIAL RETENTION

For greater productivity levels, add the hydraulic self-levelling option. It is available on all models. With the hydraulic self-levelling feature, the bucket maintains a level position while the loader arms are raised, for faster cycle times.

DESIGNED FOR LONG LIFE

The durable 435 and 445 hold up under the twisting forces of heavy-duty digging. The patented 4-point linkage uses the chassis to support the loader arms when in the digging position, reducing stress. For superior integrity, Case 400 Series Skid Steers feature straddle-mounted pins and bushings to provide uniform support and strength to the loader arms. Competitive models with cantilevered pins allow excessive bushing wear and side-to-side play, causing stress that leads to wear fatigue. The 400 Series design enables longer machine life in heavy-duty applications with demanding attachments such as tree spades and cold planers.



VALUABLE PARTNERS IN ANY OPERATION

Superior design features in the new Case 400 Series Skid Steers reflect the longstanding Case commitment to customer values such as low cost of ownership, outstanding operator comfort and productivity.

LOW COST OF OWNERSHIP

The 400 Series Skid Steers are designed to save you time and money. Built tough to handle the day-to-day action on any work site, smart design features like a “flexing” unitized chassis and loader arms that rest against the chassis maximize durability. Hydraulic pumps directly coupled to the engine help prevent power loss and costly belt maintenance. The industry-exclusive, easy-tilt ROPS ensures that these units are both easy and cost-effective to maintain, contributing to a low maintainability index rating.

OPERATOR COMFORT

Low-effort servo-hydrostatic controls and optional Ride Control, an industry first, combine to reduce fatigue. Unobstructed visibility to the bucket, tyres and curb line, and other features such as optional push-button activation of auxiliary hydraulics and a foot throttle, make operation even easier. Optional heat and air conditioning give superior comfort in any weather.

PRODUCTIVITY

Finish your jobs more quickly and efficiently than ever with the 400 Series. The low-effort servo-hydrostatic controls, and an extensive selection of heavy-duty buckets, promise faster cycle times. Optional Ride Control lets you travel faster while improving material retention. And the easy tilt ROPS features no-tool, 10-second access, making short work of service and maintenance, getting you back to work quickly.



400 SERIES

OPERATOR COMFORT



Case knows comfort is a key to productivity, and the 400 Series Skid Steers deliver. There is an operator environment for every need.

ROPS/FOPS

You can choose the standard ROPS/FOPS with side screens and rear window. For reduced sound level, add a headliner. Or, if you would like a little more protection on the sides, add side windows. A front door can also be added to the standard enclosure.

CAB/FOPS "DELUXE"

This deluxe cab includes heat, sound pads, front door, top and side windows.

CAB/FOPS "PREMIUM DELUXE"

The premium deluxe cab includes heater and air conditioning, sound pads, front door, top and side windows. And if you're working in harsh environments, a heavy-duty rear door is also available.

EASY IN - AND EASY WHILE IN

The 400 Series Skid Steer offers easy entry and exit. Just fasten the seat belt, pull down the operator seat bar and let your hands settle on the comfortable excavator-style controls.

Long days are made easier from these low-effort servo-hydrostatic controls, and a foot throttle permits control of machine movements in tight areas. Optional push-button activation of auxiliary hydraulics further improves operation.

A standard, vinyl water-shedding seat provides comfortable seating all day, and your visibility is exceptional, with generous sight lines to the bucket, tyres and curb line. An optional suspension seat is available for added comfort.

Ride Control, an industry first, reduces fatigue, while allowing you to travel faster from task to task. Ideal for loader-intensive applications, **Ride Control** also reduces the shock to the skid steer structure, attachment coupler, hydraulic system and any product or attachments carried by the loader.



ENGINES

An industry-proven power plant known for its efficiency and reliability, the Case Family III 334T/M2 Turbocharged Engine powers the 435. The 445 model features the Case Family III 445/M2 Engine.

LARGE DISPLACEMENT, HIGH TORQUE RISE

Designed for long life, these large-displacement engines from Case deliver more power all through the RPM range. For added reliability and easier repair, Case engines use up to 30% fewer parts than competitive design.

These engines provide enough power and plenty of torque rise, up to 31%, to handle really tough jobs. Case Family III Engines in the 400 Series Skid Steers are Tier 2 certified for emissions requirements.

LOW COSTS, LONG LIFE

Case Family III Engines figure well into the low cost of ownership equation, featuring low RPMs for less wear and longer life. The integral water pump and oil cooler are easily accessed for service, reducing downtime and getting you back on the job quickly.

The cooling system on the 400 Series Skid Steers features an oil cooler next to the fan, helping to cool both the engine and hydraulic system. A spark-arresting muffler is standard on all 400 Series Skid Steers.

All skid steer engines feature a 500 hour oil change recommendation.



400 SERIES

POWERTRAIN

Hydrostatic pumps are **coupled directly to the engine flywheel, delivering 100 percent of available engine power to pumps** and components. Proven radial piston hydrostatic motors efficiently transfer power to the wheels through extra heavy-duty drive chains.

Ask your Case dealer to demonstrate the industry-proven power of the 400 Series Skid Steers.



The high-torque radial piston hydrostatic motors offer faster travel speeds from an optional push-button, two-speed drive. Acceleration is from 11.3 km/h in low range to 17.7 km/h in high range.



All Case 400 Series Skid Steers are equipped with spring applied, hydraulically released brakes integrated in the drive motors.

Brakes can be applied three ways:

- press the brake button on the right-hand instrument panel to allow operation of loader arm without having to steady the machine, which is an excellent feature when working on slopes;
- for safety when raising the seat bar;
- for safety when stopping the engine.



A robust hydraulic system in the 400 Series Skid Steers helps provide smooth, reliable power for breakout force as well as lift-and-carry operations.

To transfer the power from motors to wheels the 435 and 445 use, according to ASA (American Standardization Association), a No.100 chain, which has a tensile strength that is almost double that of a No.80 chain.



EASE OF MAINTENANCE



For every minute you spend servicing a skid steer, the machine isn't making you money on the job. That's why Case 400 Series Skid Steers feature the industry's only "no-tool, 10 second" tilt ROPS for fast service and maintenance checks, letting you get to work quickly.

The no-tools tilt ROPS provides full access to the engine and other major components. Simply unlatch the cab pivot lock handles, then pull the cab forward. This can be done with the loader arms in the raised or lowered position.

ONE-STOP DAILY CHECK POINTS

Case 400 Series Skid Steers offer the time-saving convenience of a single location for daily maintenance duties. Open the rear hood to reach the fuel fill, oil fills, engine oil dipstick and the air cleaner. Swing out the rear service door for a quick check of the coolant and hydraulic oil levels. It's also very easy to clean the cooling system because the radiator pulls out to allow access. Best of all, debris doesn't end up on top of the engine or battery.

PREMIUM FILTRATION FOR LONGER LIFE

You'll get years of operation from your Case 400 Series Skid Steers, thanks to the filtration systems. The standard, dual-element air cleaner system ensures extended air filter life. A 6 micron hydraulic oil filter provides added protection.

Single-point daily servicing at the rear of the machine saves you time. Enjoy easy access to all checkpoints from under the lockable rear hood and behind the swing-out service door. No side panels to remove.



The industry's only no-tools, easy-tilt ROPS gives you fast, open access to the engine and major hydrostatic components under the operator compartment.



SPECIFICATIONS

435

445

MAIN DATA

Operating weight	kg	3140	3480
Gross Power (SAE J1349)	kW/hp	58/78	59/80
Net flywheel power (SAE J 1349)	kW/hp	54/72	55/74
Rated engine speed	rpm	2300	2300
Operating load	kg	1043/1090*	1134
Rated lift capacity	kg	2086/2180*	2268
Breakout force	N	26 670	28 245
Loader geometry		Vertical	Vertical

*W/optional heavy counter weight

ENGINE

Make		Case - Family III	Case - Family III
Model		334T/M2	445/M2
Type		Turbo	Natural aspiration
Cylinders	Nr.	3	4
Displacement	l	3.4	4.5

ELECTRICAL SYSTEM

Voltage	V	12	12
Alternator	A	95	95

TRANSMISSION

Type		Hydrostatic	Hydrostatic
Number of speeds		1/2 (opt.)	1/2 (opt.)
Ground speed (forward-reverse)	km/h	11.3/17.7	11.3/17.7
Hydraulic pump		Variable displacement	Variable displacement
Hydraulic motors		Axial pistons	Axial pistons
Final reduction		Chain	Chain
Tyres (standard)		12 x 16.5	12 x 16.5

HYDRAULIC SYSTEM

Type		Open center	Open center
Main pump		Gear type	Gear type
Total flow	l/min	83	83
Total flow with auxiliary pump (high flow)	l/min	126 (opt.)	136 (opt.)
Max. operating pressure	bar	210	210
Control valve		three-spool	three-spool
Lift cylinders	Nr.	2	2
bore x stroke	mm	64 x 1050	64 x 1050
Bucket cylinders	Nr.	2	2
bore x stroke	mm	63 x 525	63 x 525

CYCLE TIME

Raise	sec.	4.9	4.9
Lower	sec.	3.8	3.8
Dump	sec.	2.3	2.3
Rollback	sec.	1.7	1.7

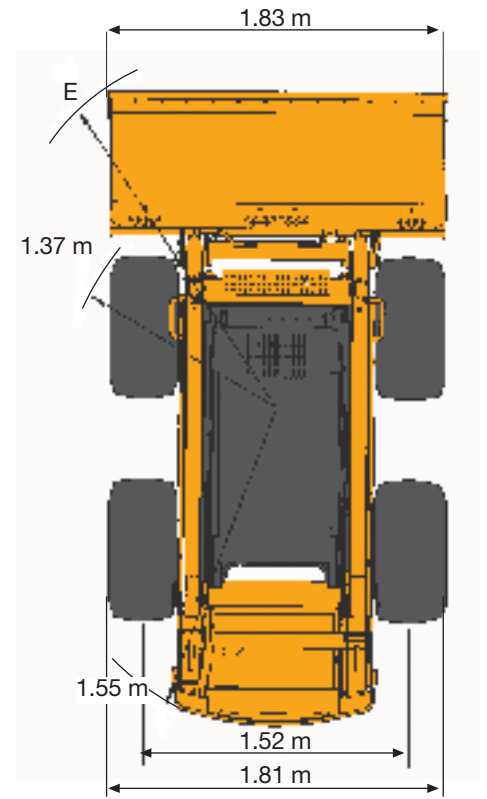
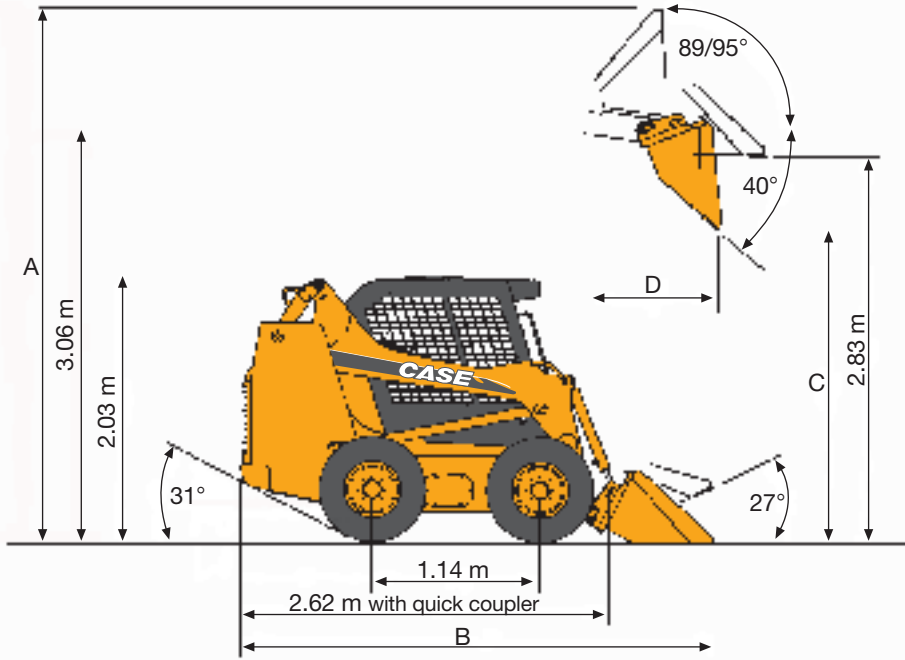
NOTE: SAE rated lift capacities.

CAB

Type		ROPS/FOPS	ROPS/FOPS
------	--	-----------	-----------

CAPACITIES

Fuel	l	66	66
Coolant	l	17	17
Engine oil (w/filter)	l	8	12
Hydraulic system			
Tank	l	22	22
Total	l	41	41



435

445

**DIRT & UTILITY
BUCKET**

**LIGHT MATERIAL
BUCKET**

**DIRT & UTILITY
BUCKET**

**LIGHT MATERIAL
BUCKET**

		435	435	445	445	
A	Max height	m	4.01	4.20	4.01	4.20
B	Total length on the ground	m	3.44	3.64	3.44	3.64
C	Dump height	m	2.34	2.21	2.28	2.21
D	Reach at max dump height	m	0.76	1.03	0.81	1.03
E	Turning radius	m	2.00	2.13	2.18	2.35



400 SERIES

ATTACHMENTS



Brush



Auger



Backhoe



Cold planer



Dozer blade



Hammer

You can deliver even more on the job site with the Case 400 Series Skid Steers. Using the extensive selection of attachments available in the market you can increase versatility and value to your job.

OPTIONAL HIGH-FLOW AUXILIARY HYDRAULICS

High-flow auxiliary hydraulics provide the power needed to maximize the productivity of high-flow attachments. A high flow auxiliary hydraulic system which delivers 126 l/min and 136 l/min at a pressure of 210 bars, is available respectively for the 435 and 445.



OPTIONAL ELECTRIC AUXILIARY HYDRAULICS

The electric auxiliary hydraulics control provides easy, finger tip control of your attachments. You can even add a second front auxiliary hydraulics package to control multi-function attachment such as a cold planer.

TYRE CHOICES

Case also offers a wide variety of tyres or tracks for optimal performance in any application.

BUCKETS CHOICES

A large selection of buckets adds to the impressive versatility of the 400 Series Skid Steers. Bucket options include short lip buckets and long lip buckets, regular-duty and heavy duty dirt buckets, utility and light material buckets.



Snow blower



Trencher



Tree spade



Stump grinder

435-445 vertical lift

STANDARD EQUIPMENT

- No-tools tilt ROPS-FOPS cab
- Operator safety restraint bar that locks out the controls
- Seat with presence detector
- Retractable seat belt
- Hand throttle + foot throttle
- Digital hourmeter
- LED bar-graph fuel indicator
- Visual and audible alarms
- Halogen working lights 2 front, 1 rear (+ 2 red tail lamps)
- Rear window with escape provision
- Socket 12 volt
- Glass roof window
- Self applied hydraulic release brake
- Auxiliary hydraulic system with ISO quick couplers
- Servo-hydrostatic controls
- Rear towing and transport hooks
- Lockable service access hood
- Single point daily servicing
- Manual coupler
- Loader safety strut
- Lift hooks

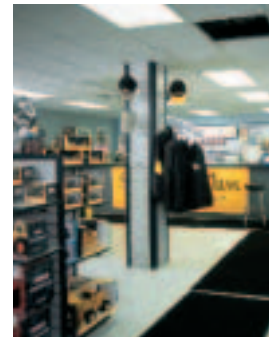
POSSIBLE ADDITIONAL OPTIONS

- 2 speeds
- Battery shut-off
- Front electrics for attachments
- Sliding side windows
- De-luxe heater
- Front door with wiper and washer
- Rear view mirror
- Rotary beacon
- Back up alarm
- Turn signals
- Engine block heater (240 Volt supply)
- Super counterweight on 435

Standard and optional equipment may vary by country



SERVICE & SUPPORT
THE CASE DEALER
YOUR PROFESSIONAL PARTNER



WORLDWIDE CASE CONSTRUCTION EQUIPMENT CONTACT INFORMATION

EUROPE/AFRICA/MIDDLE EAST:
CENTRE D'AFFAIRES EGB
5, AVENUE GEORGES BATAILLE - BP 40401
60671 LE PLESSIS-BELLEVILLE - FRANCE

NORTH AMERICA/MEXICO:
700 STATE STREET
RACINE, WI 53404 U.S.A.

LATIN AMERICA:
AV. GENERAL DAVID SARNOFF 2237
32210 - 900 CONTAGEM - MG
BELO HORIZONTE BRAZIL

ASIA PACIFIC:
UNIT 1 - 1 FOUNDATION PLACE - PROSPECT
NEW SOUTH WALES - 2148 AUSTRALIA

CHINA:
No. 29, INDUSTRIAL PREMISES, No. 376,
DE BAO ROAD, WAIGAOQIAO FTZ, PUDONG,
SHANGHAI, 200131, P.R.C.

NOTE: Standard and optional fittings can vary according to the demands and specific regulations of each country. The illustrations may include optional rather than standard fittings - consult your Case dealer. Furthermore, CNH reserves the right to modify machine specifications without incurring any obligation relating to such changes.

CNH UK Ltd.
Armstrong House
The Finningley Estate
Hayfield Lane
Doncaster
DN9 3XA
Fax +44 (0)1302 802126

Conforms to directive 98/37/CE



www.casece.com

CASE
PROFESSIONAL PARTNER